

Plotted: 1/23/2019 1:54 PM File: \\esmc\engr\ESM-1085\998\773\018\PP-plat\Plots\PP-04.dwg

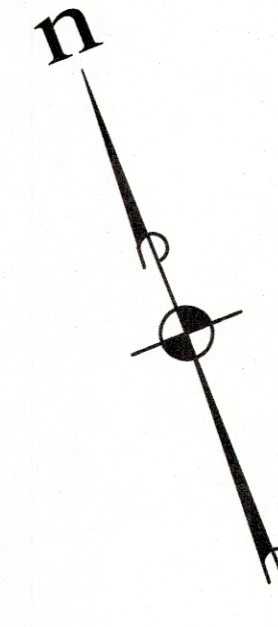
TRACT Z-4
PLAT OF "RIVER RIDGE-SUNCADIA
PHASE 2 DIVISION 3" AUDITOR'S
FILE NO. 201707240010

A PORTION OF SECTIONS 18 AND 19, TWP. 20 N., RGE., 15 E., W.M.,
KITITAS COUNTY, WASHINGTON

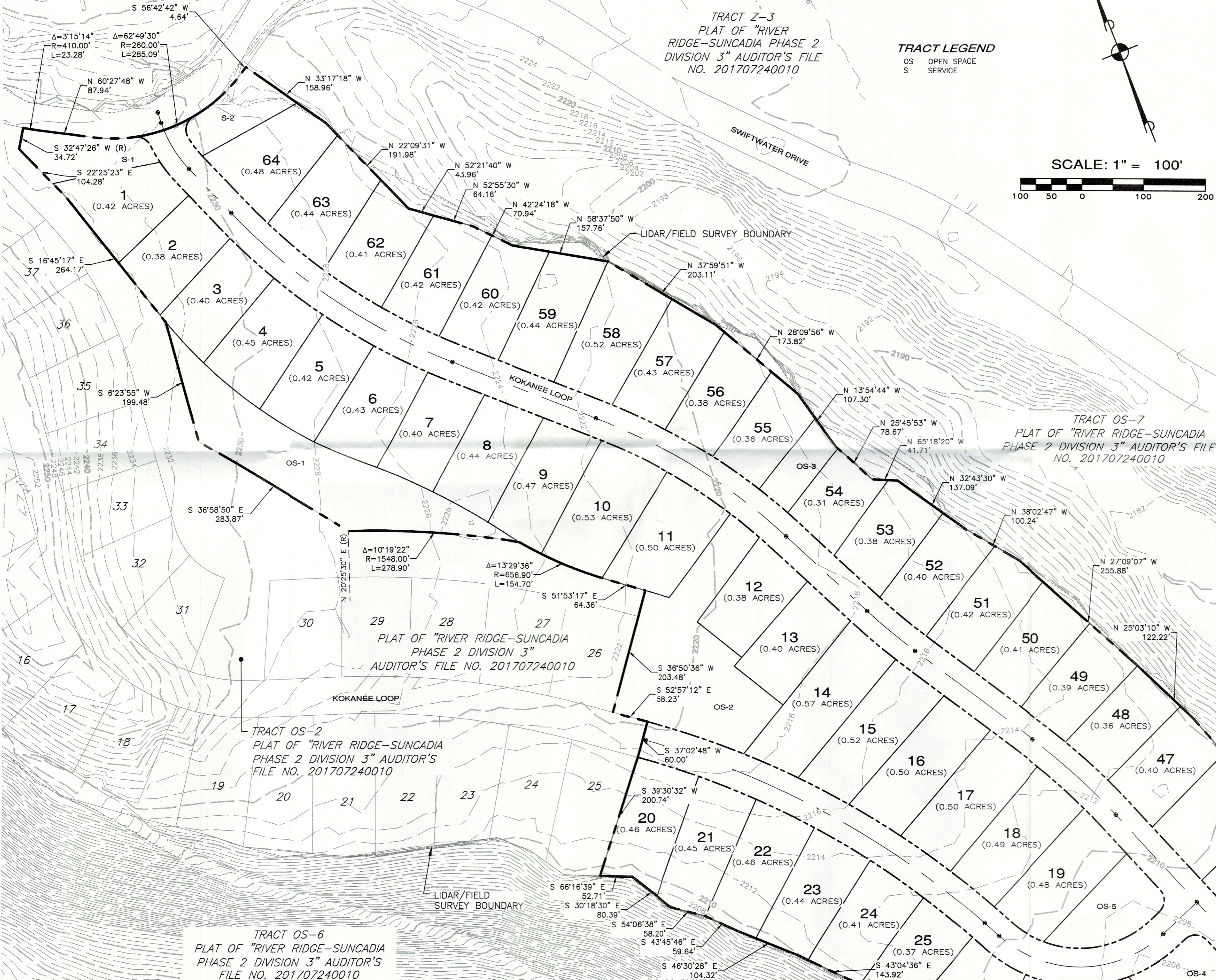
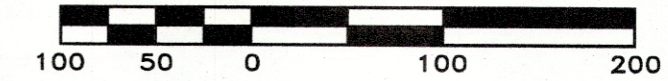
TRACT Z-3
PLAT OF "RIVER
RIDGE-SUNCADIA PHASE 2
DIVISION 3" AUDITOR'S FILE
NO. 201707240010

TRACT LEGEND

OS OPEN SPACE
S SERVICE



SCALE: 1" = 100'



REVISIONS		
NO.	DESCRIPTION/DATE	BY

ESM CONSULTING ENGINEERS LLC
39209 SW Hwy 500, Suite 505
Federal Way, WA 98003
www.esmcivil.com
Civil Engineering | Land Surveying | Project Management | Public Works | Land Planning | Landscape Architecture
FEDERAL WAY EVERETT (253) 838-8113 (425) 397-9900

NEW SUNCADIA LLC
SUNCADIA PHASE 2 DIVISION 5
(RIVER RIDGE II)
PRELIMINARY PLAT
KITITAS COUNTY WASHINGTON

JOB NO.:	998-773-018
DWG. NAME:	PP-04
DESIGNED BY:	JWH
DRAWN BY:	LGB
CHECKED BY:	
DATE:	01/21/2019
PRINT DATE:	

SHEET
PP-04

FOR CONTINUATION - SEE SHEET PP-05